



Weld Mount



Weld Mount Adhesively Bonded Fasteners



H.B. Fuller



WELD MOUNT
ADHESIVELY BONDED FASTENING SYSTEMS

Weld Mount Adhesively Bonded Fasteners



Weld Mount Fasteners

The Weld Mount System is a unique line of fasteners designed to be adhesively bonded to almost any substrate.

We offer wire tie mounts, hose and cable clamps, studs, standoffs, floating nut plates and other mounting solutions. All our fasteners are mounted with our unique non-sag acrylic adhesives which hold the parts in place on a vertical or overhead surface providing permanent high strength bonds. Our adhesives create structural bonds which provide as much as 2,700 lbs. of tensile strength in 20 to 30 minutes.

Our system can be easily installed without extensive training eliminating the high cost associated with welding or drilling and tapping.

HOW DOES IT WORK?



1
Mount the 2 part adhesive cartridge into the dispenser and mount the replaceable mixing tip.



2
Squeeze the handle to dispense a small amount of adhesive onto the bottom of the part.



3
Firmly push the part onto the substrate until the adhesive squeezes out from under the base.



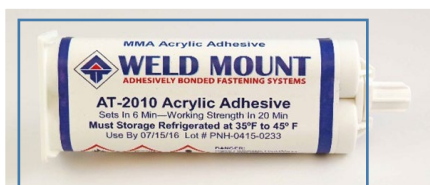
4
Depending on the adhesive selected the fastener is ready for use in 15 - 45 minutes.

Weld Mount Adhesives

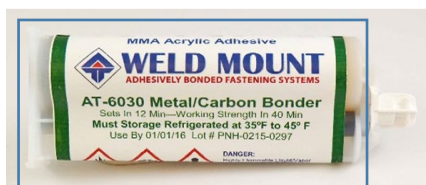


Weld Mount Adhesives

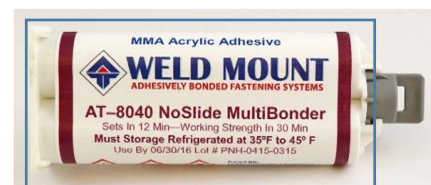
Adhesives						
Product	Chemistry	Substrates	Benefits and Features	Cure Profile	Dispense Gun	Static Mix Tip
AT-2010	Acrylic	Fiberglass	Ideal for a fast-paced work environment	Room Temp Cure Set time: 6 mins Working strength: 18 mins Full cure: 24 hours	AT-300	AT-850 3.25" Mix Tip
AT-6030	Acrylic	Metal Carbon	Best for Metal Bonding 10:1 cartridge	Room Temp Cure Set time: 15 mins Working strength: 45 mins Full cure: 24 hours	AT-301	AT-650 3.5" Mix Tip
AT-8040	Acrylic	Almost all substrates (except low energy and rubber)	Non-slide General Purpose Bonder 30 ml cartridge. Seal cap included	Room Temp Cure Set time: 12 mins Working strength: 40 mins Full cure: 24 hours	AT-300	AT-850 3.25" Mix Tip
AT-804030	Acrylic	Almost all substrates (except low energy and rubber)	Non-slide General Purpose Bonder 30 ml cartridge. Seal cap included	Room Temp Cure Set time: 12 mins Working strength: 40 mins Full cure: 24 hours	Built In	Built In
AT-880	Acrylic	Polypropylene, HDPE, LDPE, PPE, UHMW, ABS Polycarbonate, Aluminum	10 :1 Cartridge Minimal surface preparation	Room Temp Cure Open time: 3 mins Full cure: 24 hours	AT-388	AT-858 3.25" Mix Tip



AT-2010



AT-6030



AT-8040

Weld Mount Kits



Weld Mount Kits

Fastener Kits		
Product Number	Description	Contents
AT-1050 Retail Wire Tie Kit	The AT-1050 Weld Mount System is a retail wire tie kit in a clamshell package.	<ul style="list-style-type: none"> • 1 Tube AT-804030 Adhesive (30 ml) • 25 Pieces AT-5 Large White Tie Mount • 2 Mixing Sticks • 1 Plastic Mixing Sheet • Complete Step by Step Instructions
AT-65100 or AT-65109 (w/o adhesive) Sampler Kit	This kit has a variety of Weld Mount part, and everything you need to try our system at low cost.	<ul style="list-style-type: none"> • 1 Tube AT-8040 Acrylic Adhesive (50 ml) • 1 Piece AT-300 Adhesive Dispensing Gun • 5 Pieces AT-850 Adhesive Mixing Tips • 50 Pieces AT-5 White Tie Mount • 2 Pieces AT-113B Large Black Footman's Strap • 4 Pieces ST125-1420-12SS 1.00" Stainless Stud • 1 Plano Storage Box 11" x 7.25" x 2.75"
AT-7000 or AT-7009 (w/o adhesive) Industrial Maintenance Shop Kit	A wide selection of Weld Mount parts is supplied in a heavy "Durham" metal box.	<ul style="list-style-type: none"> • 1 Tube AT-8040 Acrylic Adhesive • 1 Piece AT-300 Adhesive Dispensing Gun • 10 Pieces AT-850 Adhesive Mixing Tips • 100 Pieces AT-5B Large Black Nylon Tie Mount • 25 Pieces AT-5 Large White Nylon Tie Mount • 30 Pieces AT-3B Small Black Nylon Tie Mounts • 2 Pieces AT-113 Large White Footman's Strap • 2 Pieces AT-113B Large Black Footman's Strap • 25 Pieces AT-7 Aluminum Base Wire Tie Mount • 25 Pieces AT-9 Aluminum Base Wire Tie Mount • 6 Pieces ST125-1420-12SS 0.75" Stainless Stud • 6 Pieces ST125-1420-16SS 1.00" Stainless Stud • 6 Pieces ST125-1024-12SS 0.75" Stainless Stud • 6 Pieces ST125-1024-20SS 1.25" Stainless Stud • 2 Pieces SHC-1000 • 2 Pieces DHC-1000 • 1 Heavy Duty Durham Steel Storage Box 18.5"x12.5"x 3.25"
AT-1001002 or AT-1001009 (w/o adhesive) Executive Adhesive Fastener Kit	This kit is an ideal kit for the full-service yard or custom builder.	<ul style="list-style-type: none"> • 1 Tube AT-8040 Acrylic Adhesive (50 ml) • 1 Piece AT-300 Adhesive Dispensing Gun • 10 Pieces AT-850 Adhesive Mixing Tips • 100 Pieces AT-5 Large White Tie Mount • 50 Pieces AT-3 Small White Tie Mount • 4 Pieces AT-113 Large White Footman's Strap • 4 Pieces PS62-832-16SS 1.00" Stainless Panel Stud • 10 Pieces ST125-1420-16SS Stud 1.00" Stainless Stud • 4 Pieces ST125-1420-24SS Stud 1.50" Stainless Stud • 4 Pieces ST125-1024-12SS Stud 0.75" Stainless Stud • 4 Pieces ST125-1024-24SS Stud 1.50" Stainless Stud • 1 Pieces Plano Storage Box 14" x 9" x 2.75"

Weld Mount Floating Nut Plates



Weld Mount Floating Nut Plates

Floating Nut Plates

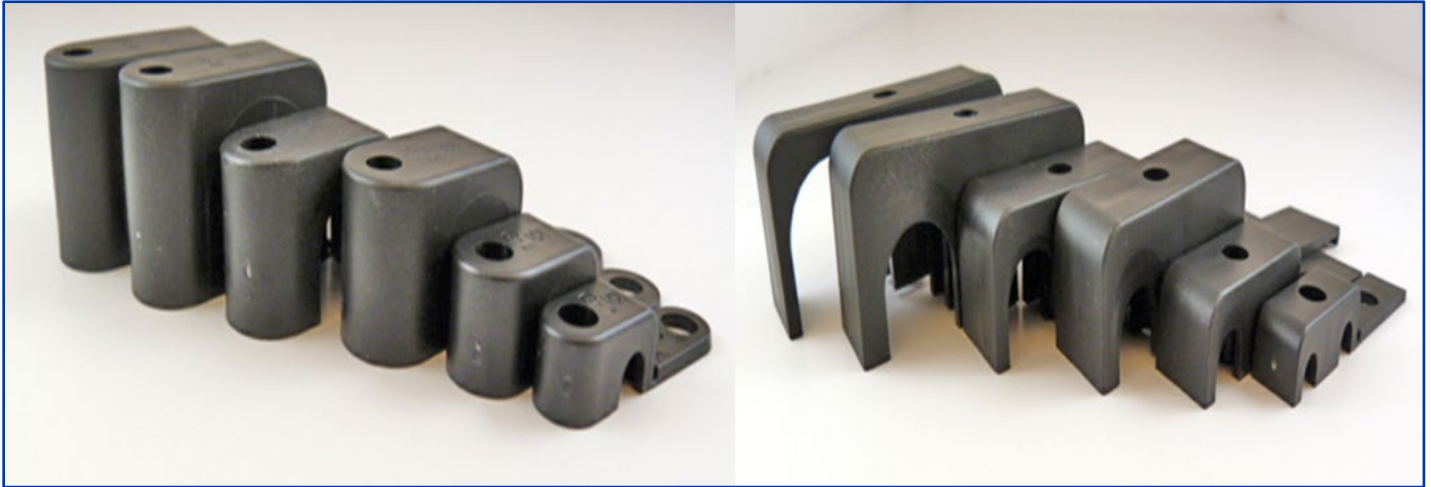
Product	Description	Material	Dimensions
FN1420SS	Floating Nut Plate, thru hole and blind mounting applications	304 Stainless/Rubber	(#1/4-20) Thread
FN1024SS	Floating Nut Plate, thru hole and blind mounting applications	304 Stainless/Rubber	(#10 - 24) Threads
FN832SS	Floating Nut Plate, thru hole and blind mounting applications	304 Stainless/Rubber	(#8-32) Thread
FNR-836-316	Removable Nut Plate, thru hole and blind mounting applications	316 Stainless/Rubber	(#8-36) Thread
FNR-1032-316	Removable Nut Plate, thru hole and blind mounting applications	316 Stainless/Rubber	(#10-32) Thread
FNR-1428-316	Removable Nut Plate, thru hole and blind mounting applications	316 Stainless/Rubber	(#1/4-28) Thread
FNR-832-316	Removable Nut Plate, thru hole and blind mounting applications	316 Stainless/Rubber	(#8-32) Thread
FNR-1024-316	Removable Nut Plate, thru hole and blind mounting applications	316 Stainless/Rubber	(#1/4-24) Thread
FNR-1420-316	Removable Nut Plate, thru hole and blind mounting applications	316 Stainless/Rubber	(#1/4-20) Thread
FNR-M407-316	Removable Nut Plate, thru hole and blind mounting applications	316 Stainless/Rubber	M4 Thread
FNR-M508-316	Removable Nut Plate, thru hole and blind mounting applications	316 Stainless/Rubber	M5 Thread
FNR-M610-316	Removable Nut Plate, thru hole and blind mounting applications	316 Stainless/Rubber	M6 Thread
FNS-508-M5SS	Sealed Nut Plate, through hole and blind mounting applications	316 Stainless/Rubber	M5 Thread



Weld Mount Hose Clamps



Weld Mount Hose Clamps



Single Hose/ Cable Clamps

Part #	Hose OD	Stud Required	Clamp Dimensions (L x W x D)	Req. Clamp Spacing	Service Temp	Material
SHC-250	0.250" (1/4")	ST125-1420-12SS	0.87" x 0.47" x 0.41"	3 feet	-22° F to +194° F	black polypropylene
SHC-375	0.375" (3/8")	ST125-1420-16SS	1.06" x 0.63" x 0.56"	3 feet	-22° F to +194° F	black polypropylene
SHC-500	0.500" (1/2")	ST125-1420-20SS	1.39" x 0.79" x 0.89"	4 feet	-22° F to +194° F	black polypropylene
SHC-625	0.625" (5/8")	ST125-1420-20SS	1.39" x 0.79" x 0.89"	4 feet	-22° F to +194° F	black polypropylene
SHC-750	0.750" (3/4")	ST125-1420-28SS	1.65" x 0.79" x 1.18"	4 feet	-22° F to +194° F	black polypropylene
SHC-1000	1.000" (1 1/8")	ST125-1420-28SS	1.65" x 0.79" x 1.18"	5 feet	-22° F to +194° F	black polypropylene

Double Hose/ Cable Clamps

Part #	Hose OD	Stud Required	Clamp Dimensions (L x W x D)	Req. Clamp Spacing	Continuous Service Temp	Material
DHC-250	0.250" (1/4")	ST125-1420-12SS	1.22" x 0.47" x 0.41"	3 feet	-22° F to +194° F	black polypropylene
DHC-375	0.375" (3/8")	ST125-1420-16SS	1.54" x 0.63" x 0.57"	3 feet	-22° F to +194° F	black polypropylene
DHC-500	0.500" (1/2")	ST125-1420-20SS	2.08" x 0.79" x 0.89"	4 feet	-22° F to +194° F	black polypropylene
DHC-625	0.625" (5/8")	ST125-1420-20SS	1.39" x 0.79" x 0.89"	4 feet	-22° F to +194° F	black polypropylene
DHC-750	0.750" (3/4")	ST125-1420-28SS	1.65" x 0.79" x 1.18"	4 feet	-22° F to +194° F	black polypropylene
DHC-1000	1.000" (1 1/8")	ST125-1420-28SS	1.65" x 0.79" x 1.18"	5 feet	-22° F to +194° F	black polypropylene



Weld Mount Studs

Weld Mount Studs

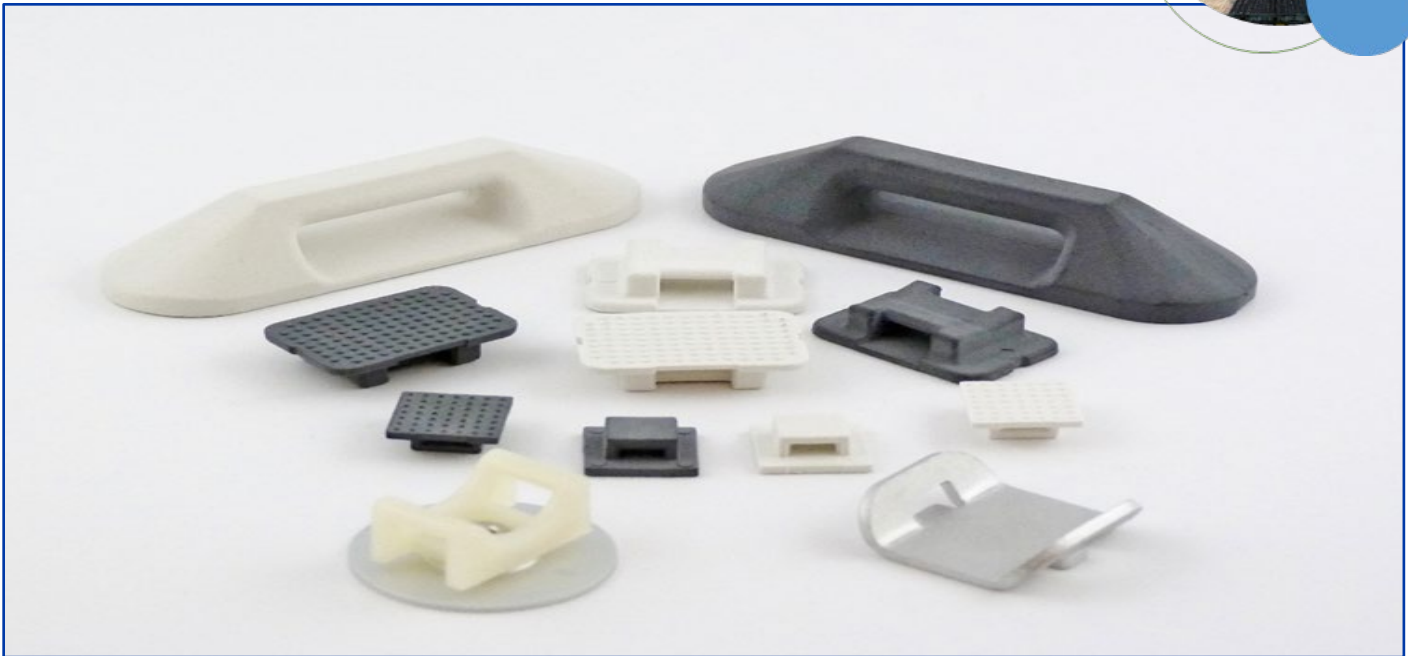
Stainless Steel Studs

Product Number	Description	Material	Dimensions	Tensile	Shear	Torque
HS200-3816-12SS	Heavy Load Studs	304 Stainless	0.75" tall x 2.00" diameter	1,200 lbs.	1,500 Lbs.	-
HS200-3816-16SS	Heavy Load Studs	304 Stainless	1.00" tall x 2.00" diameter	1,200 lbs.	1,500 Lbs.	-
HS200-3816-246SS	Heavy Load Studs	304 Stainless	1.50" tall x 2.00" diameter	1,200 lbs.	1,500 Lbs.	-
HS200-3816-32SS	Heavy Load Studs	304 Stainless	2.00" tall x 2.00" diameter	1,200 lbs.	1,500 Lbs.	-
HS200-51618-24SS	Heavy Load Studs	304 Stainless	1.50" tall x 2.00" diameter	1,200 lbs.	1,500 Lbs.	-
PS62-832-12SS	Stud Thread (#8-32) *	304 Stainless	0.75" tall x 0.62" diameter	300 lbs.	375 lbs.	-
PS62-832-16SS	Stud Thread (#8-32)	304 Stainless	1.00" tall x 0.62" diameter	300 lbs.	375 lbs.	-
PS62-832-20SS	Stud Thread (#8-32)	304 Stainless	1.25" tall x 0.62" diameter	300 lbs.	375 lbs.	-
PS62-832-24SS	Stud Thread (#8-32)	304 Stainless	1.50" tall x 0.62" diameter	300 lbs.	375 lbs.	-
PS62-832-8SS	Stud Thread (#8-32)	304 Stainless	0.50" tall x 0.62" diameter	300 lbs.	375 lbs.	-
ST125-1024-12SS	Stud Thread (#10-24)	304 Stainless	0.75" tall	500 Lbs.	650 Lbs.	60 inch/Lbs.
ST125-1024-16SS	Stud Thread (#10-24)	304 Stainless	1.00" tall	500 Lbs.	650 Lbs.	60 inch/Lbs.
ST125-1024-20SS	Stud Thread (#10-24)	304 Stainless	1.25" tall	500 Lbs.	650 Lbs.	60 inch/Lbs.
ST125-1024-24SS	Stud Thread (#10-24)	304 Stainless	1.50" tall	500 Lbs.	650 Lbs.	60 inch/Lbs.
ST125-1024-28SS	Stud Thread (#10-24)	304 Stainless	1.75" tall	500 Lbs.	650 Lbs.	60 inch/Lbs.
ST125-1024-32SS	Stud Thread (#10-24)	304 Stainless	2.00" tall	500 Lbs.	650 Lbs.	60 inch/Lbs.
ST125-1024-36SS	Stud Thread (#10-24)	304 Stainless	2.25" tall	500 Lbs.	650 Lbs.	60 inch/Lbs.
ST125-1024-40SS	Stud Thread (#10-24)	304 Stainless	2.50" tall	500 Lbs.	650 Lbs.	60 inch/Lbs.
ST125-1024-8SS	Stud Thread (#10-24)	304 Stainless	0.50" tall	500 Lbs.	650 Lbs.	60 inch/Lbs.
ST125-1420-12SS	Stud Thread (1/4-20)	304 Stainless	0.75" tall	500 Lbs.	650 Lbs.	90 inch/Lbs.
ST125-1420-16SS	Stud Thread (1/4-20)	304 Stainless	1.00" tall	500 Lbs.	650 Lbs.	90 inch/Lbs.
ST125-1420-20SS	Stud Thread (1/4-20)	304 Stainless	1.25" tall	500 Lbs.	650 Lbs.	90 inch/Lbs.
ST125-1420-24SS	Stud Thread (1/4-20)	304 Stainless	1.50" tall	500 Lbs.	650 Lbs.	90 inch/Lbs.
ST125-1420-28SS	Stud Thread (1/4-20)	304 Stainless	1.75" tall	500 Lbs.	650 Lbs.	90 inch/Lbs.
ST125-1420-32SS	Stud Thread (1/4-20)	304 Stainless	2.00" tall	500 Lbs.	650 Lbs.	90 inch/Lbs.
ST125-1420-40SS	Stud Thread (1/4-20)	304 Stainless	2.50" tall	500 Lbs.	650 Lbs.	90 inch/Lbs.

*Also available in Metric sizes



Weld Mount Strap and Tie Mounts



Weld Mount Strap and Tie Mounts

trap and Tie Mounts

Product	Description	Material	Dimensions	Pull Out
AT-3	Small Wire Tie Mount	White - Proprietary	0.20" wide	50 Lbs.
AT-3B	Small Wire Tie Mount	Black - Proprietary	0.20" wide	50 Lbs.
AT-5	White Wire Tie Mount	White - Proprietary	0.35" wide	150 Lbs.
AT-5B	Black Wire Tie Mount	Black - Proprietary	0.35" wide	150 Lbs.
AT-6	Natural Tie Mount	Ultem	0.35" wide	150 Lbs.
AT-7	Wire Tie Mount	Anodized Aluminum	0.35" wide 360° swivel	150 Lbs.
AT-8	Wire Tie Mount	5052 Aluminum	Submersible	50 Lbs. tensile
AT-9	Wire Tie Mount	5052 Aluminum	Submersible	250 Lbs. tensile
AT-113	Nylon Strap Mounts	Nylon	3.25" long x 1" wide 1.3" max strap width	300 Lbs.
AT-113B	Nylon Strap Mounts	Nylon	3.25" long x 1" wide 1.3" max strap width	300 Lbs.

Weld Mount Blind Threaded Standoffs

Weld Mount Blind Threaded Standoffs



Blind Threaded Standoff

Product Number	Description	Material	Dimensions	Torque
SOB125-1024-12SS	304 Blind Threaded Standoff	304 Stainless	0.75" Tall x 1.25" diameter	90 inch/Lbs.
SOB125-1420-12SS	304 Blind Threaded Standoff	304 Stainless	0.75" Tall x 1.25" diameter	90 inch/Lbs.
SOB125-51618-12SS	304 Blind Threaded Standoff	304 Stainless	0.75" Tall x 1.25" diameter	90 inch/Lbs.
SOT125-1024-12SS	316 Thru Threaded Standoff	304 Stainless	0.75" Tall x 1.25" diameter	90 inch/Lbs.
SOT125-1420-12SS	316 Thru Threaded Standoff	304 Stainless	0.75" Tall x 1.25" diameter	90 inch/Lbs.
SOT125-51618-12SS	316 Thru Threaded Standoff	304 Stainless	0.75" Tall x 1.25" diameter	90 inch/Lbs.
IW-1024	Insulation Washer	Polypropylene	3" Round	-
SC-1024	Cosmetic Stud Covers for ST125	304 Stainless White Stud Cover	3" diameter for #10 x 24 Studs	-
SC-1420	Cosmetic Stud Covers for ST125	304 Stainless White Stud Cover	3" diameter for 1/4 x 20 Studs	-





For more information about our company, visit www.hbfuller.com/aerospace

 Join the Conversation | www.hbfuller.com/connect

IMPORTANT: It is the user's responsibility to test and determine the suitability of a product for the user's intended use. Any product samples provided for testing are provided in accordance with standard limited warranties as stated on our technical data sheets, and the H.B. Fuller General Terms and Conditions of Sale apply. All other terms are rejected.

© H.B. Fuller Company, 2021